

MODERN TRADITIONALISM

ELIZABETH DACKSON



WHAT IS MODERN TRADITIONALISM IN QUILTING?

Use of an identifiable traditional block, modernized in some way, using design techniques like color, scale, symmetry, and grid placement

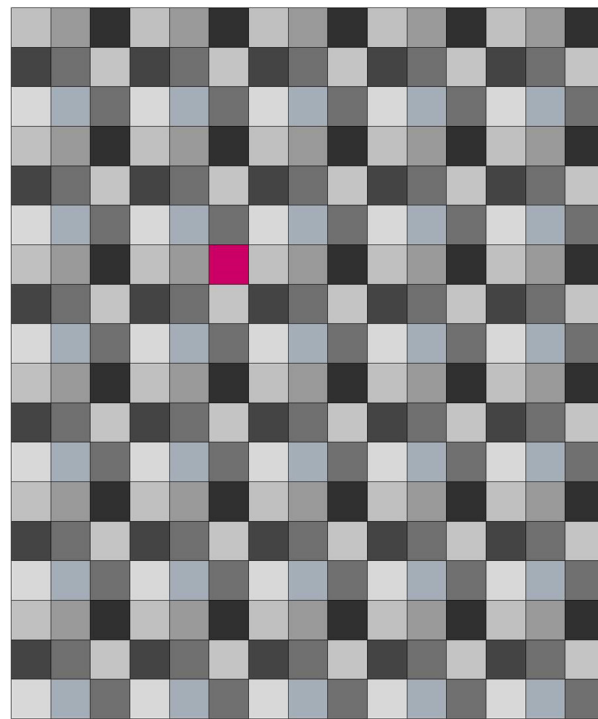
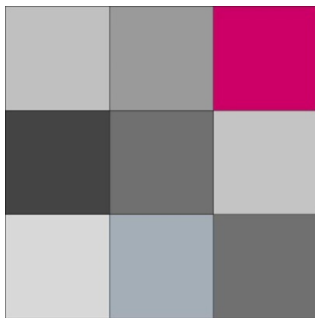
HOW CAN YOU APPROACH MODERN TRADITIONALISM?

COLOR

Using fresh color palettes, perhaps using surprising singular pops of color like so, taking the traditional 9-patch block into consideration

Let's again look at the traditional 9-patch, and strictly play with color. 9-patch blocks are traditionally two color blocks, with a light and dark color alternating throughout the block. If we build on that same idea, of using light and dark, and get tonal with a block, we might wind up with something like these...

Which could turn into a quilt something like this...

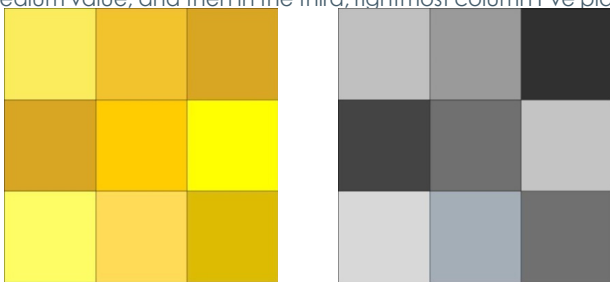


MODERN TRADITIONALISM

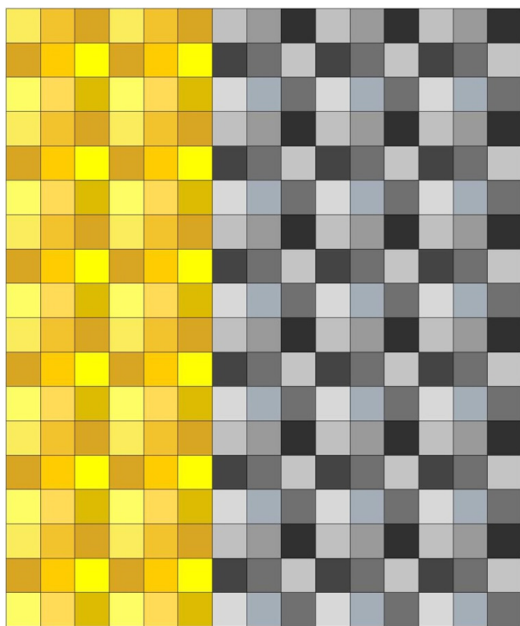
ELIZABETH DACKSON



Another interesting way to use color in the 9 patch block would be to use a gradation of color across a repeat of several blocks. Let's try making two blocks that create a color shift as your eye reads them. I've taken the first column of squares and placed the lightest shades of my purple and blue there, then in the second column I've placed a medium value, and then in the third, rightmost column I've placed



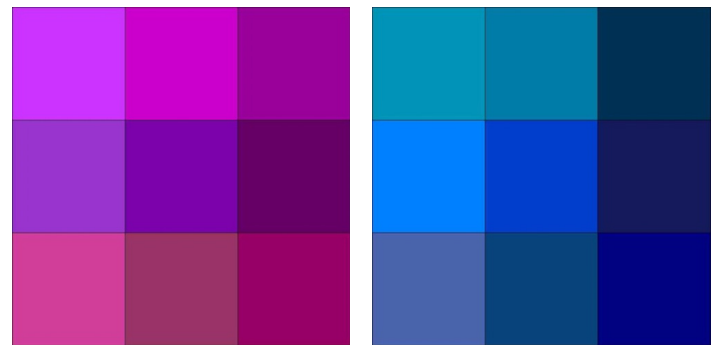
the darkest shades.



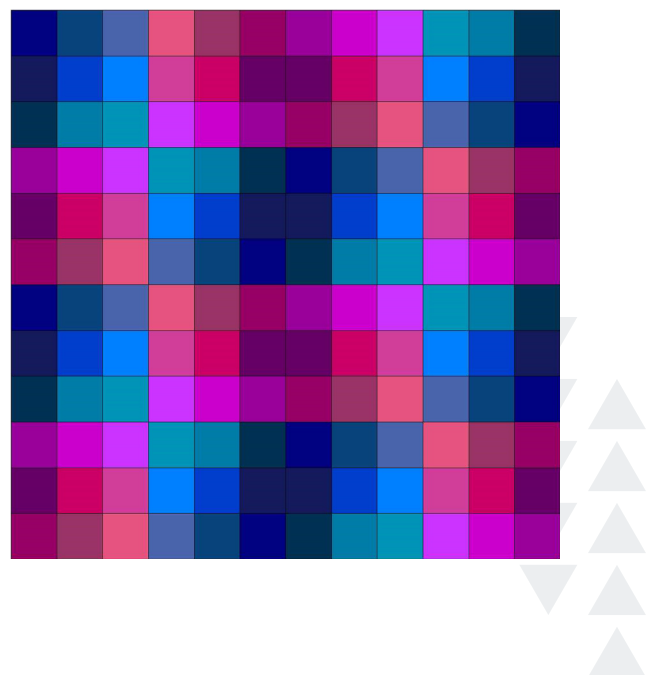
Next, let's place those two blocks in a quilt. I've simply rotated the blocks around to make sure that the light side of the blue blocks touches the light side of the purple blocks and vice versa, and I've created an interesting color wash as a result.

It doesn't even feel like a 9-patch anymore, does it?

SCALE AND SYMMETRY



Symmetry: Most traditional quilt blocks have an extreme amount of symmetry to them. By taking a traditional block and giving it an element of asymmetry, you can have an amazing modern block



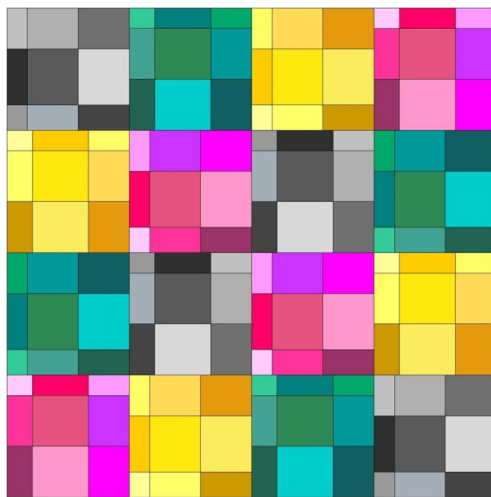
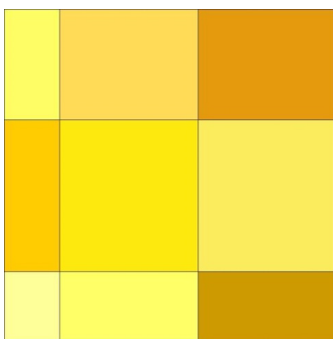
MODERN TRADITIONALISM

ELIZABETH DACKSON

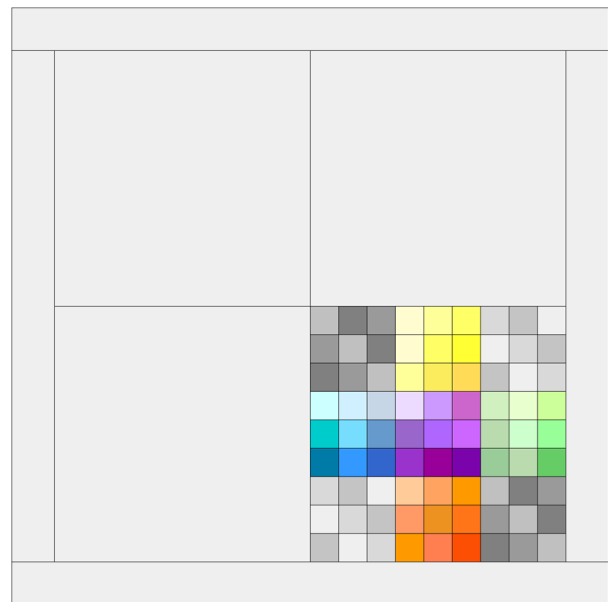


on your hands. Let's take the same Traditional 9-patch for example and rather than playing with squares, let's make this block more asymmetrical...

Even if we place this asymmetrical block in a traditional grid layout, we still wind up with a very modern looking quilt...



Scale: Alternatively, we can keep our symmetry and play with scale to create more modern visual interest as well. Jumbo blocks started to rise in popularity when the Swoon pattern was released by Camille Roskelley, and haven't left the quilting scene since. It can be fun to put together jumbo blocks, as it brings you to a finished project much faster! But when we combine jumbo blocks with tiny blocks, we can create something truly special and memorable.



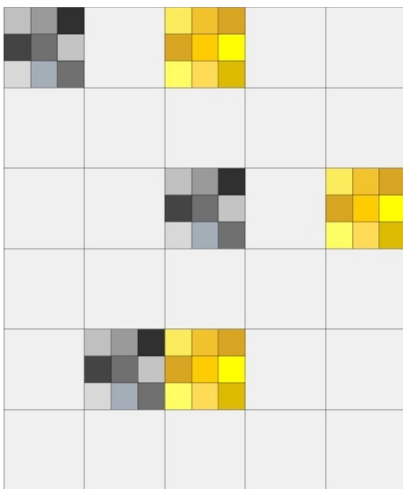
MODERN TRADITIONALISM

ELIZABETH DACKSON

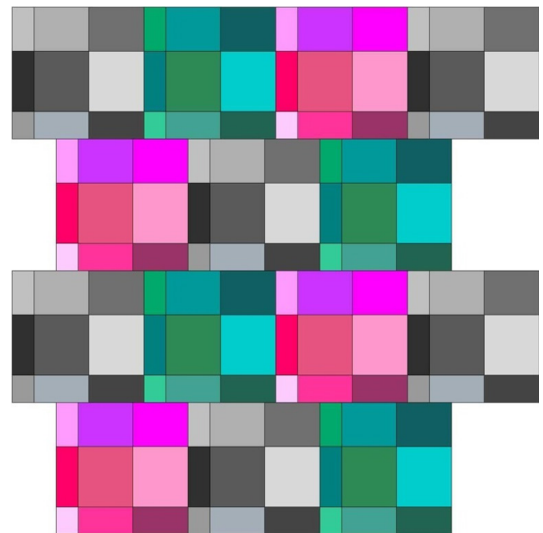


GRID PLACEMENT

Grid Placement can be equally powerful. By taking that tonal 9-patch we've been working with, and placing it off-center throughout the quilt, you wind up with a even more modern look.



You can also offset your blocks for an added modern twist.



SUPPORTING LINKS

www.dontcallmebetsy.com

Instagram: [dontcallmebetsy](https://www.instagram.com/dontcallmebetsy)

SUPPORTED BY:

